

NEW
LAUNCH

NEPTUNE

HIGH QUALITY OUTDOOR SIGNAGE
INKJET PRINTER

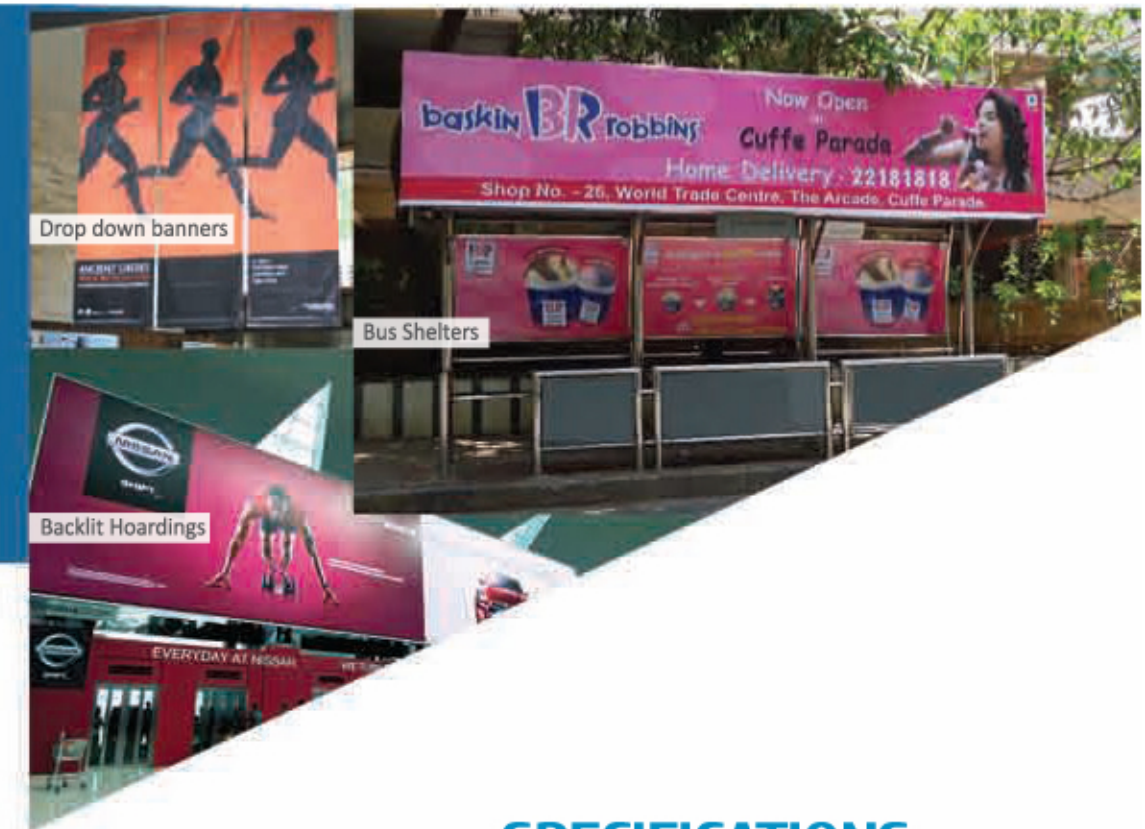


- New Neptune is a perfect combination of robust, performance and style
- New intelligent design and host of advanced features facilitate ease of use
- Double fan array helps in faster drying and vibrant color reproduction
- In-built LED lights provide print preview with enhanced clarity

NEPTUNE is signature product. It offers very high value for money in its class, and has been an unending success story for all its users. Neptune is a 3.2 mtr roll-to-roll solvent printer that combines high quality and high production speed. It is based on industrial Drop-on-Demand Japanese printhead technology. Neptune is the finest solution for outdoor advertising applications customers who need quality prints at very high speed. It is ideal for sign shops and commercial printers seeking to upgrade quality and offer greater versatility and speed at an optimally cost effective price. It is also an excellent solution for corporate in-house production of exhibition graphics, posters, signage, billboards, etc.



HIGH SPEED, HIGH QUALITY & MAX PRODUCTIVITY; BEST VALUE FOR MONEY



SPECIFICATIONS

NEPTUNE		
Printing Technology	Drop-on-demand, Piezo Electric Inkjet	
Print Heads	Industrial Grade Jetting Assemblies	
Media	Width	3300 mm (129 in)
	Thickness	Maximum 3.0 mm (120 mil) with liner (flexible)
	Roll Outer Diameter	Maximum 300 mm (12 in), 50.8 (2 in)
	Roll Weight	Maximum 90 kg
	Core Diameter	76.2 mm (3 in)
Type	Sav, PVC Banner, Backlit Film, Window Film (Solvent Base)	
Printing Width	Maximum 3200 mm (126 in)	
Inks	Type	Solvent/Mild Solvent Inks
	Colors	4 Colors (CMYK)
Printing Resolution (dots per inch)	Maximum 1440 dpi	
Distance Accuracy	Error of less than ±0.3 % of distance traveled, or ±0.3 mm, whichever is greater	
Media Heating	Pre-heater and post-heater, setting range for the preset temperature: 30 to 60°C. Dryer setting range for the preset temperature: 30 to 60°C	
Connectivity	High Speed USB	
Power Requirements	AC 220 V ±10%, 15 A, 50/60 Hz	
Dimension	4500 x 1000 x 1400 mm (WxDxH)	
Weight (approx. with stand)	300 Kgs	
Environmental	Power ON	Temperature: 18 to 28°C Humidity: 20 to 80%RH (Non-condensing)
	Power OFF	Temperature: 5 to 40°C Humidity: 20 to 80%RH (Non-condensing)
Speed	4442	8442
Mode 1	42 sqm/hr (452 sq. ft/hr)	70 sqm/hr (753 sq. ft/hr)
Mode 2	28 sqm/hr (300 sq. ft/hr)	55 sqm/hr (592 sq. ft/hr)
Mode 3	24 sqm/hr (259 sq. ft/hr)	40 sqm/hr (430 sq. ft/hr)